



HOOSIERS BY THE NUMBERS

Your premier source for labor market information for Indiana.



LABOR MARKET REVIEW



December 2019 Labor Market Review

Reported by: **Cassie Janes**

Regional Workforce Analyst
[Email Cassie](#)
cjanes@dwd.in.gov

Tel: 765-454-4760



LABOR MARKET REVIEW

Economic Growth Region 4

Statistical Data Report for December 2019, Released February 2020

State Employment and Unemployment

Unemployment rates were lower in February in 4 states and stable in 46 states and the District of Columbia, the U.S. Bureau of Labor Statistics reported. Seven states had jobless rate decreases from a year earlier, 2 states had increases, and 41 states and the District had little or no change. The national unemployment rate declined to 3.8 percent over the month and was 0.3 percentage point lower than in February 2018.



Economic Growth Region (EGR) 4

Benton, Carroll, Cass, Clinton, Fountain, Howard, Miami, Montgomery, Tippecanoe, Tipton, Warren and White Counties.

December 2019 Labor Force Estimates (not seasonally adjusted)						
Area	Labor Force	Employed	Unemployed	Dec-19	Nov-19	Dec-18
U.S.	164,007,000	158,504,000	5,503,000	3.4%	3.3%	3.7%
IN	3,352,305	3,250,841	101,464	3.0%	3.2%	3.4%
EGR 4	251,836	244,698	7,138	2.8%	3.0%	3.2%
Kokomo MSA	37,785	36,483	1,302	3.4%	3.4%	3.8%
Lafayette MSA	110,779	107,936	2,843	2.6%	2.9%	3.0%
Benton Co.	4,521	4,394	127	2.8%	2.9%	3.2%
Carroll Co.	10,113	9,840	273	2.7%	2.8%	3.3%
Cass Co.	17,737	17,139	598	3.4%	3.2%	3.5%
Clinton Co.	16,959	16,558	401	2.4%	2.6%	2.7%
Fountain Co.	7,972	7,693	279	3.5%	3.5%	3.7%
Howard Co.	37,785	36,483	1,302	3.4%	3.4%	3.8%
Miami Co.	15,309	14,740	569	3.7%	3.6%	3.8%
Montgomery Co.	18,672	18,160	512	2.7%	3.0%	3.1%
Tippecanoe Co.	96,145	93,702	2,443	2.5%	2.9%	2.9%
Tipton Co.	9,179	8,982	197	2.1%	2.2%	2.4%
Warren Co.	4,168	4,043	125	3.0%	3.0%	3.1%
White Co.	13,276	12,964	312	2.4%	2.5%	2.9%
Attica	1,471	1,428	43	2.9%	3.7%	3.3%
Crawfordsville	7,235	7,023	212	2.9%	3.3%	3.5%
Delphi	1,300	1,269	31	2.4%	3.2%	3.5%
Fowler	1,131	1,093	38	3.4%	3.5%	3.3%
Frankfort	7,980	7,798	182	2.3%	2.8%	2.3%
Kokomo	25,955	24,995	960	3.7%	3.5%	4.2%
Lafayette	38,328	37,400	928	2.4%	2.7%	2.7%
Logansport	7,836	7,556	280	3.6%	3.6%	3.5%
Monticello	2,637	2,572	65	2.5%	2.7%	2.6%
Peru	4,571	4,370	201	4.4%	4.5%	4.2%
Tipton	2,798	2,720	78	2.8%	3.0%	2.7%
West Lafayette	21,312	20,847	465	2.2%	2.6%	2.7%
Williamsport	837	816	21	2.5%	3.1%	3.4%

Unemployment Rates by State (seasonally adjusted): December 2019

U.S. - 3.5%
 Illinois - 3.7%
Indiana - 3.2%
 Kentucky - 4.3%
 Michigan - 3.9%
 Ohio - 4.2%

Source: U.S. Department of Labor, Bureau of Labor Statistics

Unemployment Rank by County (of 92 counties): December 2019

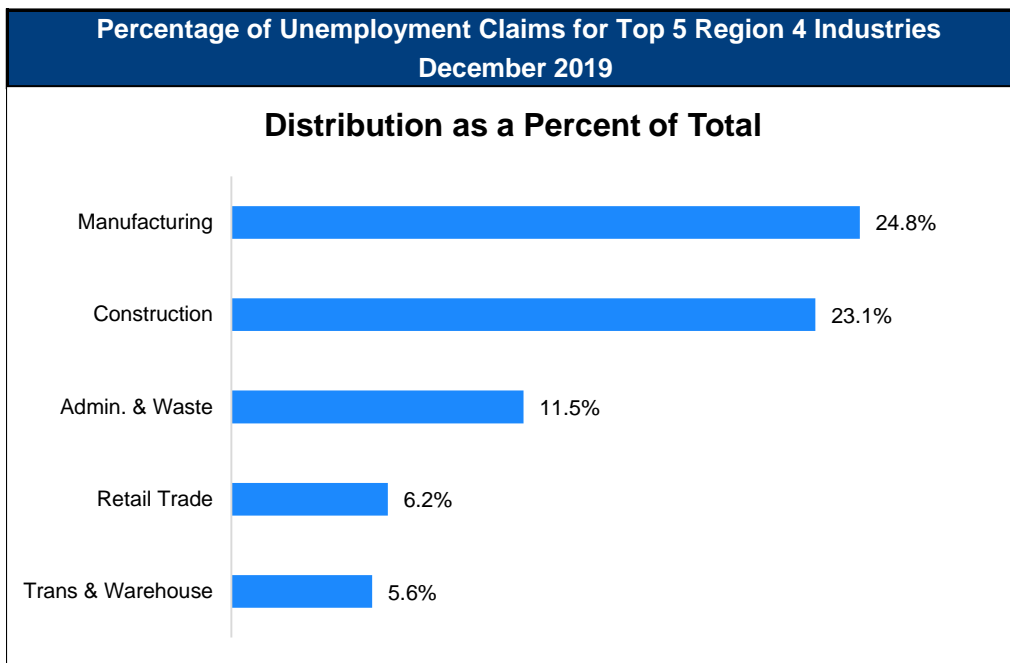
#14 - Miami (3.7%)
 #17 - Fountain (3.5%)
 #21 - Cass (3.4%)
 #23 - Howard (3.4%)
 #43 - Warren (3%)
 #55 - Benton (2.8%)
 #58 - Carroll (2.7%)
 #63 - Montgomery (2.7%)
 #72 - Tippecanoe (2.5%)
 #76 - Clinton (2.4%)
 #82 - White (2.4%)
 #91 - Tipton (2.1%)

Source: Indiana Department of Workforce Development, Research and Development, Local Area Unemployment Statistics

Source: Indiana Department of Workforce Development, Research & Analysis, Local Area Unemployment Statistics | Unemployment Statistics Released:01/20 | Notes: The data displayed are presented as estimates only. The most recent month's data are always preliminary and are revised when the next month's data are released.

Consumer Price Index (CPI-U Change), Unadjusted Percent Change to December 2019 from				
CPI Item	Dec-18	Nov-19	Dec-18	Nov-19
	U.S. City		Midwest Region*	
All Items	2.3%	-0.1%	2.3%	0.0%
Food & Beverages	1.7%	0.1%	1.8%	0.1%
Housing	2.6%	0.1%	2.3%	0.3%
Apparel	-1.2%	-3.2%	-1.4%	-4.0%
Transportation	1.9%	-0.6%	3.1%	-0.1%
Medical Care	4.6%	0.4%	3.6%	-0.4%
Recreation	1.5%	0.1%	2.0%	0.2%
Education & Communication	1.4%	-0.1%	0.8%	0.0%
Other Goods & Services	2.3%	-0.2%	2.4%	-0.3%

*Midwest region = Midwest Urban Average. Midwest Region includes Illinois, Indiana, Iowa, Kansas, Michigan, Minnesota, Missouri, Nebraska, North Dakota, Ohio, South Dakota and Wisconsin | Source: U.S. Bureau of Labor Statistics



Source: Indiana Department of Workforce Development, Research and Analysis

WARN Notices

WARN Notices for Region 4 for December 2019				
Company	City	County	# of workers affected	Notice Date

There are no WARN Notices for December 2019 for Region 4.

Source: Indiana Department of Workforce Development, WARN Notices | For information on WARN Act requirements, you may go to the U.S. Department of Labor Employment Training Administration Fact Sheet:

<https://www.doleta.gov/programs/factsht/warn.htm>

Unemployment Claims: December 2019

Region 4

Initial Claims

12/07/19 - 222(D)

12/14/19 - 180(D)

12/21/19 - 237(D)

12/28/19 - 187(D)

Continued Claims

12/07/19 - 964

12/14/19 - 1,063

12/21/19 - 1,134

12/28/19 - 1,283

Total Claims

12/07/19 - 1,186

12/14/19 - 1,243

12/21/19 - 1,371

12/28/19 - 1,470

State of Indiana

Initial Claims

12/07/19 - 3,819

12/14/19 - 3,256

12/21/19 - 3,733

12/28/19 - 3,232

Continued Claims

12/07/19 - 13,763

12/14/19 - 15,184

12/21/19 - 16,121

12/28/19 - 18,423

Total Claims

12/07/19 - 17,582

12/14/19 - 18,440

12/21/19 - 19,854

12/28/19 - 21,655

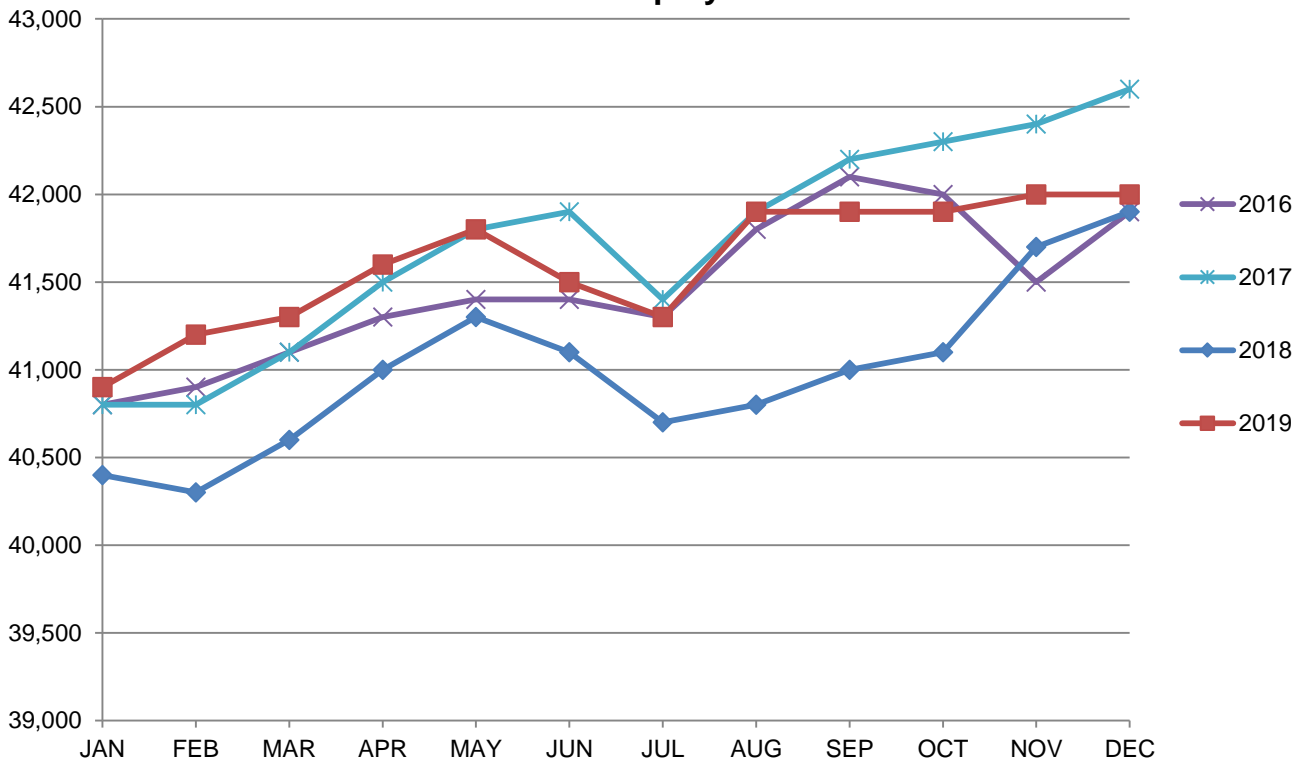
(D) indicates item is affected by non-disclosure issues relating to industry or ownership status |

Source: Indiana Department of Workforce Development, Research and Development

Kokomo MSA							
Wage and Salaried Employment	December 2019			# Change	% Change	# Change	% Change
Industry	Dec-19	Nov-19	Dec-18	Nov-19 to Dec-19	Dec-18 to Dec-19	Dec-18 to Dec-19	Dec-18 to Dec-19
Total Nonfarm	42,200	42,200	41,900	0	0.0%	300	0.7%
Total Private	37,400	37,300	36,900	100	0.3%	500	1.4%
Goods Producing	13,500	13,400	13,200	100	0.8%	300	2.3%
Service-Providing	28,700	28,800	28,700	-100	-0.4%	0	0.0%
Private Service Providing	23,900	23,900	23,700	0	0.0%	200	0.8%
Mining, Logging and Construction	1,200	1,200	1,200	0	0.0%	0	0.0%
Manufacturing	12,300	12,200	12,000	100	0.8%	300	2.5%
Trade, Transportation, and Utilities	6,900	6,800	6,800	100	1.5%	100	1.5%
Wholesale Trade	1,000	1,000	1,000	0	0.0%	0	0.0%
Retail Trade	5,000	4,900	4,900	100	2.0%	100	2.0%
Transportation, Warehousing, and Utilities	900	900	900	0	0.0%	0	0.0%
Information	200	200	200	0	0.0%	0	0.0%
Financial Activities	1,200	1,200	1,200	0	0.0%	0	0.0%
Leisure and Hospitality	4,200	4,200	4,300	0	0.0%	-100	-2.3%
Other Services	1,800	1,900	1,800	-100	-5.3%	0	0.0%
Government	4,800	4,900	5,000	-100	-2.0%	-200	-4.0%
Local Government	3,300	3,400	3,500	-100	-2.9%	-200	-5.7%
Local Government Educational Services	2,100	2,100	2,200	0	0.0%	-100	-4.6%
Local Government excluding Educational Services	1,200	1,300	1,300	-100	-7.7%	-100	-7.7%

Source: Indiana Dept of Workforce Development, Research and Analysis, Current Employment Statistics

Kokomo MSA Employment Trends

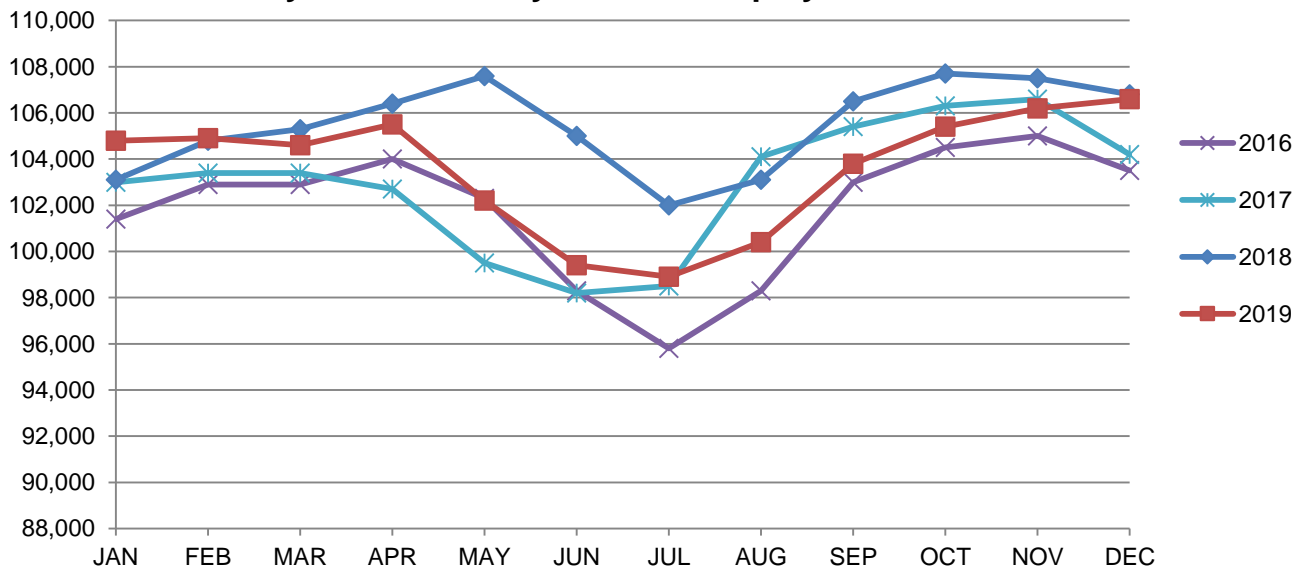


Source: Indiana Department of Workforce Development, Research & Analysis, Current Employment Statistics | Note: Historical data for the most recent 4 years (both seasonally adjusted and not seasonally adjusted) are revised near the beginning of each calendar year, prior to the release of January estimates for statewide data.

Lafayette-West Lafayette MSA							
Wage and Salaried Employment	December 2019			# Change	% Change	# Change	% Change
Industry	Dec-19	Nov-19	Dec-18	Nov-19 to Dec-19		Dec-18 to Dec-19	
Total Nonfarm	106,600	106,200	106,800	400	0.4%	-200	-0.2%
Total Private	79,000	79,100	78,200	-100	-0.1%	800	1.0%
Goods Producing	24,100	24,100	23,500	0	0.0%	600	2.6%
Service Providing	82,500	82,100	83,300	400	0.5%	-800	-1.0%
Private Service Providing	54,900	55,000	54,700	-100	-0.2%	200	0.4%
Mining, Logging and Construction	3,500	3,600	3,500	-100	-2.8%	0	0.0%
Manufacturing	20,600	20,500	20,000	100	0.5%	600	3.0%
Durable Goods	14,700	14,800	15,200	-100	-0.7%	-500	-3.3%
Trade, Transportation and Utilities	14,500	14,500	14,800	0	0.0%	-300	-2.0%
Wholesale Trade	2,600	2,600	2,500	0	0.0%	100	4.0%
Retail Trade	9,200	9,200	9,600	0	0.0%	-400	-4.2%
Transportation, Warehousing and Utilities	2,700	2,700	2,700	0	0.0%	0	0.0%
Information	700	700	700	0	0.0%	0	0.0%
Financial Activities	3,500	3,400	3,500	100	2.9%	0	0.0%
Professional and Business Services	7,700	7,800	8,100	-100	-1.3%	-400	-4.9%
Education and Health Services	13,200	13,100	12,800	100	0.8%	400	3.1%
Leisure and Hospitality	10,100	10,300	9,900	-200	-1.9%	200	2.0%
Accommodation and Food Services	8,900	9,100	9,300	-200	-2.2%	-400	-4.3%
Other Services	5,200	5,200	4,900	0	0.0%	300	6.1%
Total Government	27,600	27,100	28,600	500	1.9%	-1,000	-3.5%
Federal Government	500	500	500	0	0.0%	0	0.0%
State Government	20,000	19,500	20,900	500	2.6%	-900	-4.3%
Local Government	7,100	7,100	7,200	0	0.0%	-100	-1.4%
Local Government Educational Services	4,500	4,500	4,500	0	0.0%	0	0.0%

Source: Indiana Dept of Workforce Development, Research and Analysis, Current Employment Statistics

Lafayette-West Lafayette MSA Employment Trends



Source: Indiana Department of Workforce Development, Research & Analysis, Current Employment Statistics | Note: Historical data for the most recent 4 years (both seasonally adjusted and not seasonally adjusted) are revised near the beginning of each calendar year, prior to the release of January estimates for statewide data.

Frequently Listed Jobs	
Top 20 job listings by number of openings in Region 4 in the past month	
Rank	Occupations
1	Production Workers, All Other
2	Registered Nurses
3	Engineers, All Other
4	Heavy and Tractor-Trailer Truck Drivers
5	Computer User Support Specialists
6	Managers, All Other
7	Healthcare Practitioners and Technical Workers, All Other
8	Landscaping and Groundskeeping Workers
9	Security Guards
10	Counter Attendants, Cafeteria, Food Concession, and Coffee Shop
11	Nursing Assistants
12	Retail Salespersons
13	Personal Care Aides
14	Stock Clerks- Stockroom, Warehouse, or Storage Yard
15	Food Preparation Workers
16	Customer Service Representatives
17	Executive Secretaries and Executive Administrative Assistants
18	Licensed Practical and Licensed Vocational Nurses
19	First-Line Supervisors of Production and Operating Workers
20	Tellers

Source: Indiana Workforce Development, Indiana Career Connect

Applicant Pool	
Top 20 occupations desired by applicants on their resumes in the past 12 months	
Occupations	# of applicants
Production Workers, All Other	1027
Assemblers and Fabricators, All Other	772
Helpers--Production Workers	490
Laborers and Freight, Stock, and Material Movers, Hand	421
Customer Service Representatives	282
Cashiers	279
Team Assemblers	234
Office Clerks, General	203
Office and Administrative Support Workers, All Other	192
Managers, All Other	183
Extraction Workers, All Other	181
Stock Clerks and Order Fillers	159
Nursing Assistants	151
First-Line Supervisors of Production and Operating Workers	151
Welders, Cutters, Solderers, and Brazers	147
Industrial Truck and Tractor Operators	139
Retail Salespersons	136
Combined Food Preparation and Serving Workers, Including Fast Food	127
Engineering Technicians, Except Drafters, All Other	127
Janitors and Cleaners, Except Maids and Housekeeping Cleaners	126

Source: Indiana Workforce Development, Indiana Career Connect

Career Outlook



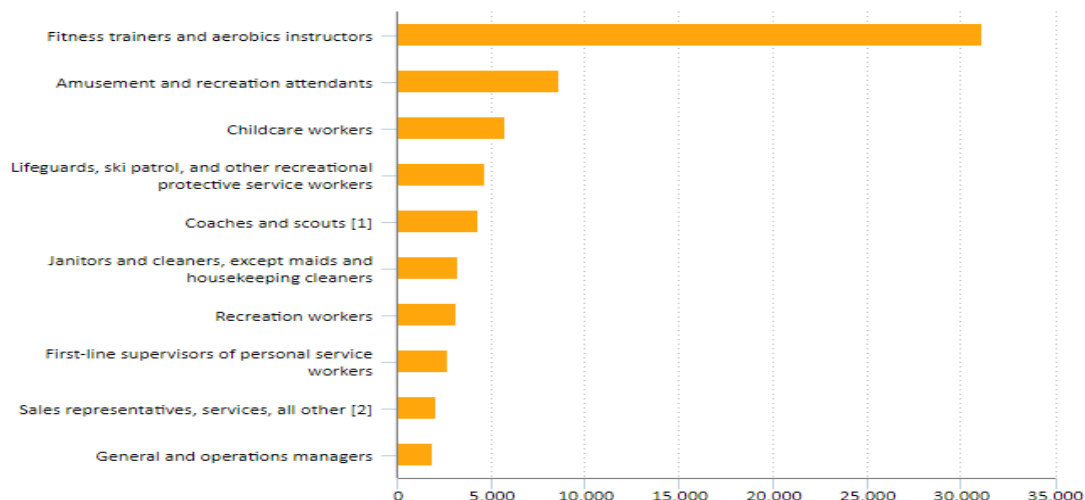
Data on display

Strong growth projected in fitness and recreational sports centers, 2018–28

Elka Torpey | January 2020

If you've resolved to get in shape this year, you might seek out an exercise facility to help accomplish that goal. That's good news for employment in the fitness and recreational sports centers industry. In fact, the U.S. Bureau of Labor Statistics (BLS) projects employment for most occupations in these centers to grow at least 15 percent, much faster than the average for all occupations in all industries, through 2028. As the chart shows, [fitness trainers and aerobics instructors](#) is projected to add the most jobs in these centers: about 31,100 over the 2018 to 2028 decade. This occupation also had the most employment in the industry in 2018, accounting for nearly 1 in 3 jobs.

Chart 1. Occupations with the most new jobs in fitness and recreational sports centers, projected 2018–28



[General and operations managers](#) in fitness and recreational sports centers had a median hourly wage of \$33.04 in 2018, the highest for the occupations shown—and more than triple that of [lifeguards, ski patrol, and other recreational protective service workers](#), which at \$10.35 had the lowest industry wage for the occupations charted. These managers usually work full time, year round. But part-time, seasonal jobs are common in many of the other occupations in the chart, which is why it shows hourly, instead of annual, wages.

Typically, you can enter most of the occupations in the chart with a high school diploma or less education, plus on-the-job training. [Coaches and scouts](#) typically need a bachelor's degree; general and operations managers typically must have a degree and 5 or more years of experience.

Elka Torpey, "Strong growth projected in fitness and recreational sports centers, 2018–28," *Career Outlook*, U.S. Bureau of Labor Statistics, January 2020.

