



HOOSIERS BY THE NUMBERS

Your premier source for labor market information for Indiana.



LABOR MARKET REVIEW



January 2020 Labor Market Review

Reported by: **Cassie Janes**

Regional Workforce Analyst
[Email Cassie](#)
cjanes@dwd.in.gov

Tel: 765-454-4760



LABOR MARKET REVIEW

Economic Growth Region 4

Statistical Data Report for January 2020, Released March 2020

State Employment and Unemployment

Unemployment rates were lower in January in 5 states and stable in 45 states and the District of Columbia, the U.S. Bureau of Labor Statistics reported. Eleven states had jobless rate decreases from a year earlier, 1 state had an increase, and 38 states and the District had little or no change. The national unemployment rate, 3.6 percent, was little changed over the month but was 0.4 percentage point lower than in January 2019.



Economic Growth Region (EGR) 4

Benton, Carroll, Cass, Clinton, Fountain, Howard, Miami, Montgomery, Tippecanoe, Tipton, Warren and White Counties.

January 2020 Labor Force Estimates (not seasonally adjusted)						
Area	Labor Force	Employed	Unemployed	Jan-20	Dec-19	Jan-19
U.S.	163,497,000	156,994,000	6,504,000	4.0%	3.4%	4.4%
IN	3,374,213	3,252,717	121,496	3.6%	3.0%	4.2%
EGR 4	256,067	247,249	8,818	3.4%	2.7%	4.1%
Kokomo MSA	36,973	35,419	1,554	4.2%	3.5%	4.8%
Lafayette MSA	116,253	112,596	3,657	3.1%	2.4%	3.8%
Benton Co.	4,555	4,407	148	3.2%	2.7%	4.4%
Carroll Co.	10,362	10,009	353	3.4%	2.6%	4.1%
Cass Co.	17,707	16,982	725	4.1%	3.3%	4.6%
Clinton Co.	17,014	16,511	503	3.0%	2.3%	3.5%
Fountain Co.	7,904	7,599	305	3.9%	3.4%	4.7%
Howard Co.	36,973	35,419	1,554	4.2%	3.5%	4.8%
Miami Co.	15,036	14,385	651	4.3%	3.7%	4.7%
Montgomery Co.	18,661	18,044	617	3.3%	2.7%	3.9%
Tippecanoe Co.	101,336	98,180	3,156	3.1%	2.4%	3.8%
Tipton Co.	9,061	8,793	268	3.0%	2.1%	3.5%
Warren Co.	4,163	4,027	136	3.3%	2.9%	3.8%
White Co.	13,295	12,893	402	3.0%	2.3%	3.9%
Attica	1,490	1,440	50	3.4%	2.8%	4.3%
Crawfordsville	7,244	6,984	260	3.6%	2.9%	4.3%
Delphi	1,330	1,289	41	3.1%	2.3%	4.0%
Fowler	1,129	1,094	35	3.1%	3.2%	3.7%
Frankfort	8,031	7,793	238	3.0%	2.2%	3.2%
Kokomo	25,417	24,280	1,137	4.5%	3.7%	5.1%
Lafayette	39,729	38,568	1,161	2.9%	2.3%	3.4%
Logansport	7,822	7,484	338	4.3%	3.5%	4.9%
Monticello	2,633	2,556	77	2.9%	2.4%	4.1%
Peru	4,464	4,251	213	4.8%	4.3%	4.9%
Tipton	2,758	2,663	95	3.4%	2.8%	3.9%
West Lafayette	23,181	22,515	666	2.9%	2.1%	3.6%
Williamsport	839	811	28	3.3%	2.5%	4.4%

Unemployment Rates by State (seasonally adjusted): January 2020

U.S. - 3.6%
 Illinois - 3.5%
Indiana - 3.1%
 Kentucky - 4.3%
 Michigan - 3.8%
 Ohio - 4.1%

Source: U.S. Department of Labor, Bureau of Labor Statistics

Unemployment Rank by County (of 92 counties): January 2020

#15 - Miami (4.3%)
 #21 - Howard (4.2%)
 #23 - Cass (4.1%)
 #31 - Fountain (3.9%)
 #56 - Carroll (3.4%)
 #62 - Montgomery (3.3%)
 #64 - Warren (3.3%)
 #65 - Benton (3.2%)
 #72 - Tippecanoe (3.1%)
 #75 - Clinton (3%)
 #80 - Tipton (3%)
 #81 - White (3%)

Source: Indiana Department of Workforce Development, Research and Development, Local Area Unemployment Statistics

Source: Indiana Department of Workforce Development, Research & Analysis, Local Area Unemployment Statistics | Unemployment Statistics Released:02/20 | Notes: The data displayed are presented as estimates only. The most recent month's data are always preliminary and are revised when the next month's data are released.

Consumer Price Index (CPI-U Change), Unadjusted Percent Change to January 2020 from				
CPI Item	Jan-19	Dec-19	Jan-19	Dec-19
	U.S. City		Midwest Region*	
All Items	2.5%	0.4%	2.5%	0.4%
Food & Beverages	1.7%	0.5%	1.6%	0.4%
Housing	2.7%	0.5%	2.5%	0.4%
Apparel	-1.3%	1.5%	-0.8%	2.0%
Transportation	2.8%	-0.1%	4.4%	0.1%
Medical Care	4.5%	0.5%	3.1%	0.4%
Recreation	1.4%	0.4%	2.1%	0.6%
Education & Communication	1.5%	0.2%	0.7%	0.2%
Other Goods & Services	2.8%	0.6%	3.1%	0.5%

*Midwest region = Midwest Urban Average. Midwest Region includes Illinois, Indiana, Iowa, Kansas, Michigan, Minnesota, Missouri, Nebraska, North Dakota, Ohio, South Dakota and Wisconsin | Source: U.S. Bureau of Labor Statistics

Unemployment Claims: January 2020

Region 4

Initial Claims

01/04/20 - 263(D)
 01/11/20 - 305(D)
 01/18/20 - 226(D)
 01/25/20 - 158(D)

Continued Claims

01/04/20 - 1,336
 01/11/20 - 1,337
 01/18/20 - 1,384
 01/25/20 - 1,444

Total Claims

01/04/20 - 1,599
 01/11/20 - 1,642
 01/18/20 - 1,610
 01/25/20 - 1,602

State of Indiana

Initial Claims

01/04/20 - 4,222
 01/11/20 - 4,626
 01/18/20 - 3,564
 01/25/20 - 2,809

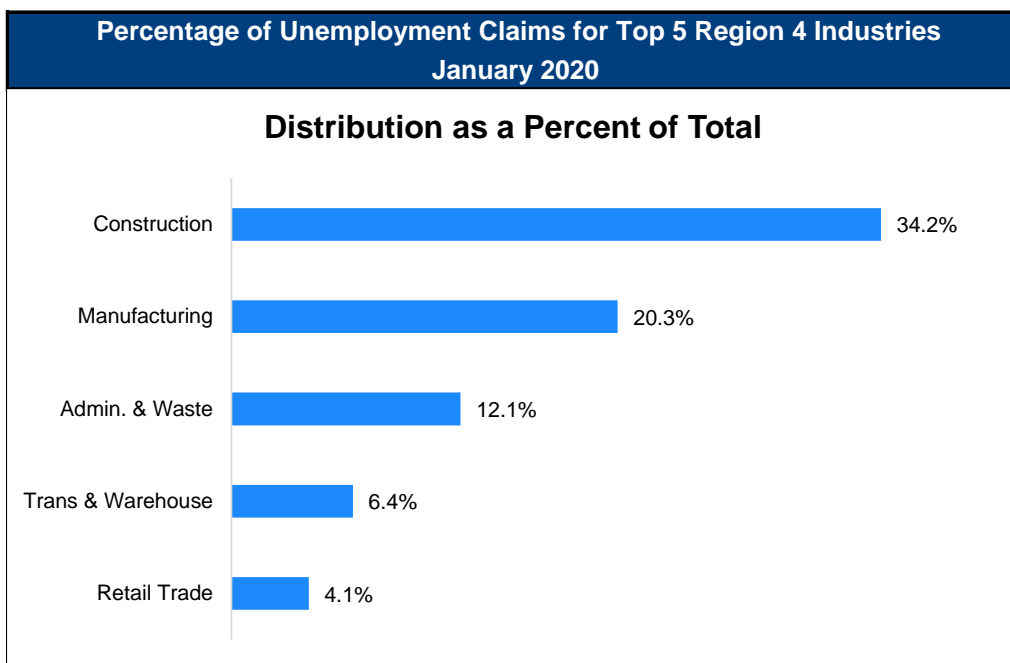
Continued Claims

01/04/20 - 19,475
 01/11/20 - 19,512
 01/18/20 - 19,651
 01/25/20 - 19,871

Total Claims

01/04/20 - 23,697
 01/11/20 - 24,138
 01/18/20 - 23,215
 01/25/20 - 22,680

(D) indicates item is affected by non-disclosure issues relating to industry or ownership status | Source: Indiana Department of Workforce Development, Research and Development



Source: Indiana Department of Workforce Development, Research and Analysis

WARN Notices

WARN Notices for Region 4 for January 2020				
Company	City	County	# of workers affected	Notice Date

There are no WARN Notices for January 2020 for Region 4.

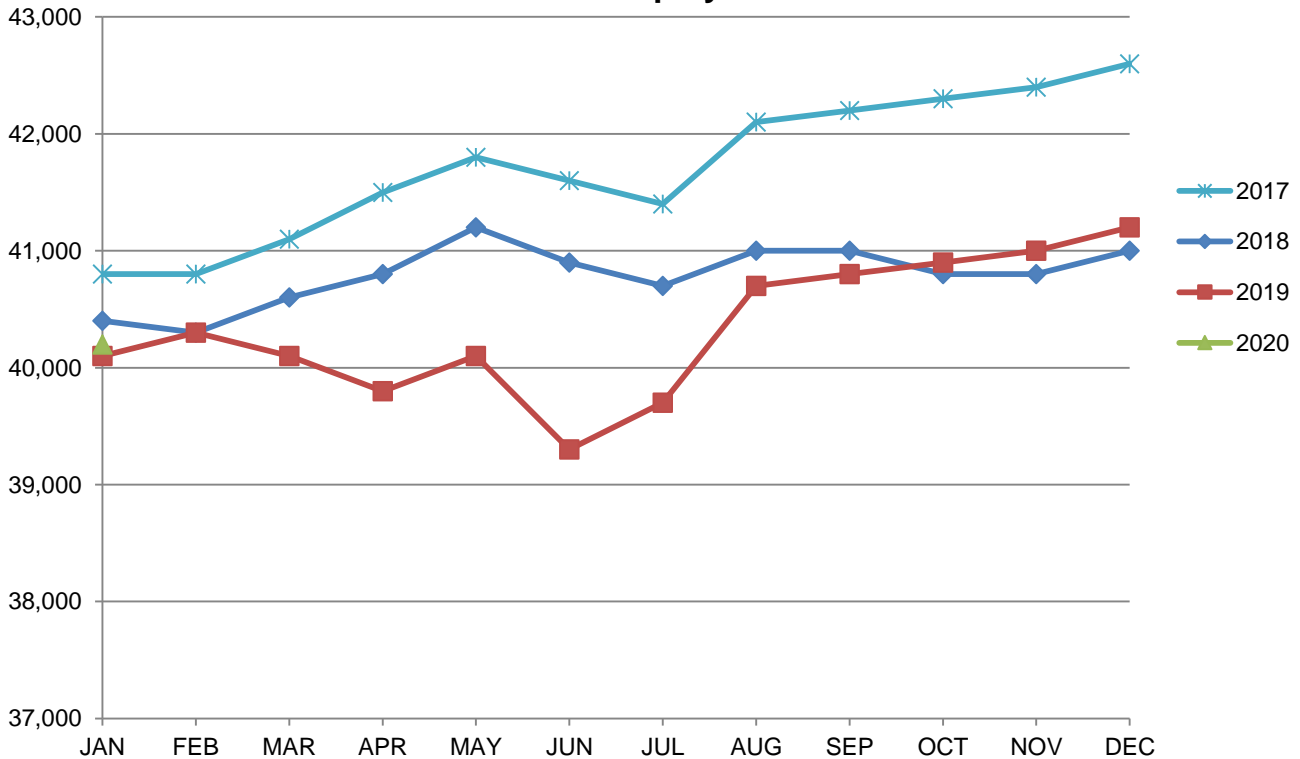
Source: Indiana Department of Workforce Development, WARN Notices | For information on WARN Act requirements, you may go to the U.S. Department of Labor Employment Training Administration Fact Sheet:

<https://www.doleta.gov/programs/factsht/warn.htm>

Kokomo MSA							
Wage and Salaried Employment	January 2020			# Change	% Change	# Change	% Change
Industry	Jan-20	Dec-19	Jan-19	Dec-19 to Jan-20		Jan-19 to Jan-20	
Total Nonfarm	40,200	41,200	40,100	-1,000	-2.4%	100	0.3%
Total Private	35,300	36,100	35,200	-800	-2.2%	100	0.3%
Goods Producing	12,700	13,100	12,500	-400	-3.1%	200	1.6%
Service-Providing	27,500	28,100	27,600	-600	-2.1%	-100	-0.4%
Private Service Providing	22,600	23,000	22,700	-400	-1.7%	-100	-0.4%
Mining, Logging and Construction	1,200	1,300	1,100	-100	-7.7%	100	9.1%
Manufacturing	11,500	11,800	11,400	-300	-2.5%	100	0.9%
Trade, Transportation, and Utilities	6,200	6,500	6,600	-300	-4.6%	-400	-6.1%
Wholesale Trade	900	900	900	0	0.0%	0	0.0%
Retail Trade	4,500	4,700	4,800	-200	-4.3%	-300	-6.3%
Transportation, Warehousing, and Utilities	800	900	900	-100	-11.1%	-100	-11.1%
Information	200	200	200	0	0.0%	0	0.0%
Financial Activities	1,200	1,200	1,200	0	0.0%	0	0.0%
Leisure and Hospitality	4,200	4,300	4,400	-100	-2.3%	-200	-4.6%
Other Services	1,800	1,800	1,800	0	0.0%	0	0.0%
Government	4,900	5,100	4,900	-200	-3.9%	0	0.0%
Local Government	3,400	3,500	3,400	-100	-2.9%	0	0.0%
Local Government Educational Services	2,100	2,200	2,100	-100	-4.6%	0	0.0%
Local Government excluding Educational Services	1,300	1,300	1,300	0	0.0%	0	0.0%

Source: Indiana Dept of Workforce Development, Research and Analysis, Current Employment Statistics

Kokomo MSA Employment Trends

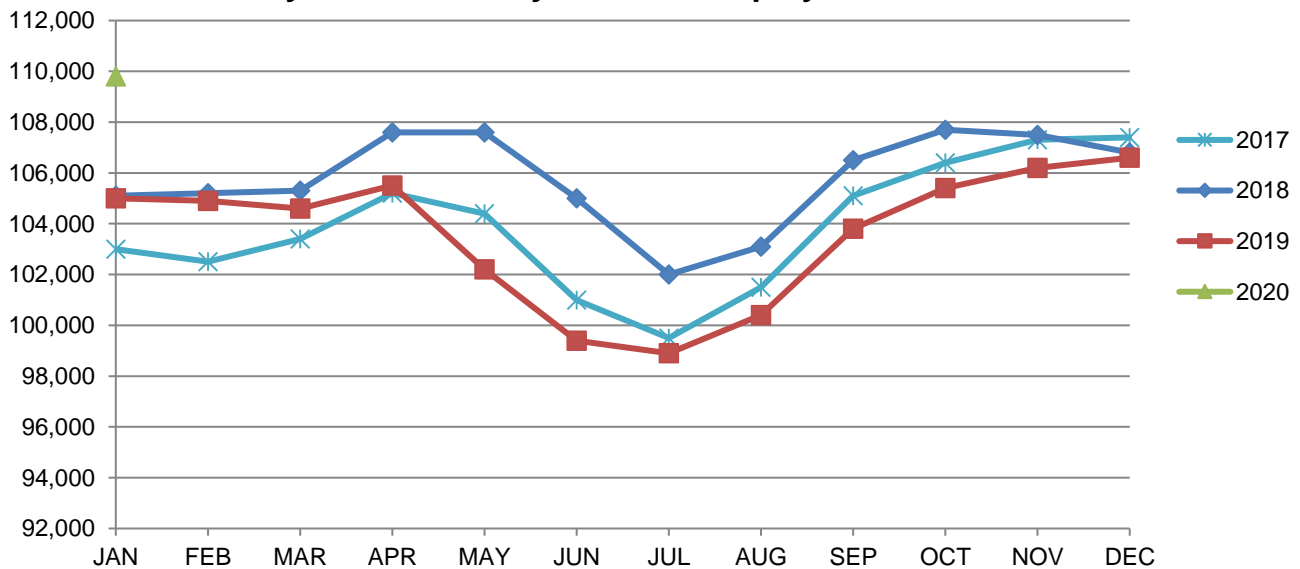


Source: Indiana Department of Workforce Development, Research & Analysis, Current Employment Statistics | Note: Historical data for the most recent 4 years (both seasonally adjusted and not seasonally adjusted) are revised near the beginning of each calendar year, prior to the release of January estimates for statewide data.

Lafayette-West Lafayette MSA							
Wage and Salaried Employment	January 2020			# Change	% Change	# Change	% Change
Industry	Jan-20	Dec-19	Jan-19	Dec-19 to Jan-20	Jan-19 to Jan-20		
Total Nonfarm	109,800	112,100	107,100	-2,300	-2.1%	2,700	2.5%
Total Private	78,200	79,600	77,400	-1,400	-1.8%	800	1.0%
Goods Producing	23,700	24,000	23,100	-300	-1.3%	600	2.6%
Service Providing	86,100	88,100	84,000	-2,000	-2.3%	2,100	2.5%
Private Service Providing	54,500	55,600	54,300	-1,100	-2.0%	200	0.4%
Mining, Logging and Construction	3,600	3,800	3,400	-200	-5.3%	200	5.9%
Manufacturing	20,100	20,200	19,700	-100	-0.5%	400	2.0%
Durable Goods	15,100	15,200	15,300	-100	-0.7%	-200	-1.3%
Trade, Transportation and Utilities	14,500	15,000	14,600	-500	-3.3%	-100	-0.7%
Wholesale Trade	2,300	2,400	2,500	-100	-4.2%	-200	-8.0%
Retail Trade	9,500	9,800	9,500	-300	-3.1%	0	0.0%
Transportation, Warehousing and Utilities	2,700	2,800	2,600	-100	-3.6%	100	3.9%
Information	800	800	700	0	0.0%	100	14.3%
Financial Activities	3,400	3,400	3,300	0	0.0%	100	3.0%
Professional and Business Services	7,600	7,800	8,200	-200	-2.6%	-600	-7.3%
Education and Health Services	13,400	13,400	12,900	0	0.0%	500	3.9%
Leisure and Hospitality	9,700	10,100	9,700	-400	-4.0%	0	0.0%
Accommodation and Food Services	9,300	9,500	9,100	-200	-2.1%	200	2.2%
Other Services	5,100	5,100	4,900	0	0.0%	200	4.1%
Total Government	31,600	32,500	29,700	-900	-2.8%	1,900	6.4%
Federal Government	500	500	500	0	0.0%	0	0.0%
State Government	24,200	24,900	21,900	-700	-2.8%	2,300	10.5%
Local Government	6,900	7,100	7,300	-200	-2.8%	-400	-5.5%
Local Government Educational Services	4,200	4,400	4,500	-200	-4.6%	-300	-6.7%

Source: Indiana Dept of Workforce Development, Research and Analysis, Current Employment Statistics

Lafayette-West Lafayette MSA Employment Trends



Source: Indiana Department of Workforce Development, Research & Analysis, Current Employment Statistics | Note: Historical data for the most recent 4 years (both seasonally adjusted and not seasonally adjusted) are revised near the beginning of each calendar year, prior to the release of January estimates for statewide data.

Frequently Listed Jobs	
Top 20 job listings by number of openings in Region 4 in the past month	
Rank	Occupations
1	Helpers--Carpenters
2	Production Workers, All Other
3	Registered Nurses
4	Engineers, All Other
5	Customer Service Representatives
6	Healthcare Practitioners and Technical Workers, All Other
7	Stock Clerks, Sales Floor
8	Licensed Practical and Licensed Vocational Nurses
9	Managers, All Other
10	Painters, Transportation Equipment
11	Computer User Support Specialists
12	Nursing Assistants
13	Counter Attendants, Cafeteria, Food Concession, and Coffee Shop
14	Dining Room and Cafeteria Attendants and Bartender Helpers
15	Office Clerks, General
16	First-Line Supervisors of Production and Operating Workers
17	Security Guards
18	Combined Food Preparation and Serving Workers, Including Fast Food
19	Farmworkers and Laborers, Crop
20	Retail Salespersons

Source: Indiana Workforce Development, Indiana Career Connect

Applicant Pool	
Top 20 occupations desired by applicants on their resumes in the past 12 months	
Occupations	# of applicants
Production Workers, All Other	1536
Assemblers and Fabricators, All Other	1115
Helpers--Production Workers	641
Laborers and Freight, Stock, and Material Movers, Hand	599
Cashiers	366
Customer Service Representatives	356
Team Assemblers	302
Extraction Workers, All Other	289
Office and Administrative Support Workers, All Other	253
Managers, All Other	247
Office Clerks, General	240
Construction Laborers	236
Industrial Truck and Tractor Operators	230
Stock Clerks and Order Fillers	218
First-Line Supervisors of Production and Operating Workers	214
Welders, Cutters, Solderers, and Brazers	210
Retail Salespersons	200
Heavy and Tractor-Trailer Truck Drivers	190
Nursing Assistants	178
Janitors and Cleaners, Except Maids and Housekeeping Cleaners	172

Source: Indiana Workforce Development, Indiana Career Connect

TED: The Economics Daily

25 major work stoppages in 2019 involving 425,500 workers

FEBRUARY 14, 2020

There were 25 major work stoppages in 2019, each involving 1,000 workers or more and lasting at least one shift. That was the largest number of major work stoppages since 2001. Between 2010 and 2019 there were 154 work stoppages, an average of 15 stoppages a year.

Annual work stoppages involving 1,000 or more workers, 1947–2019



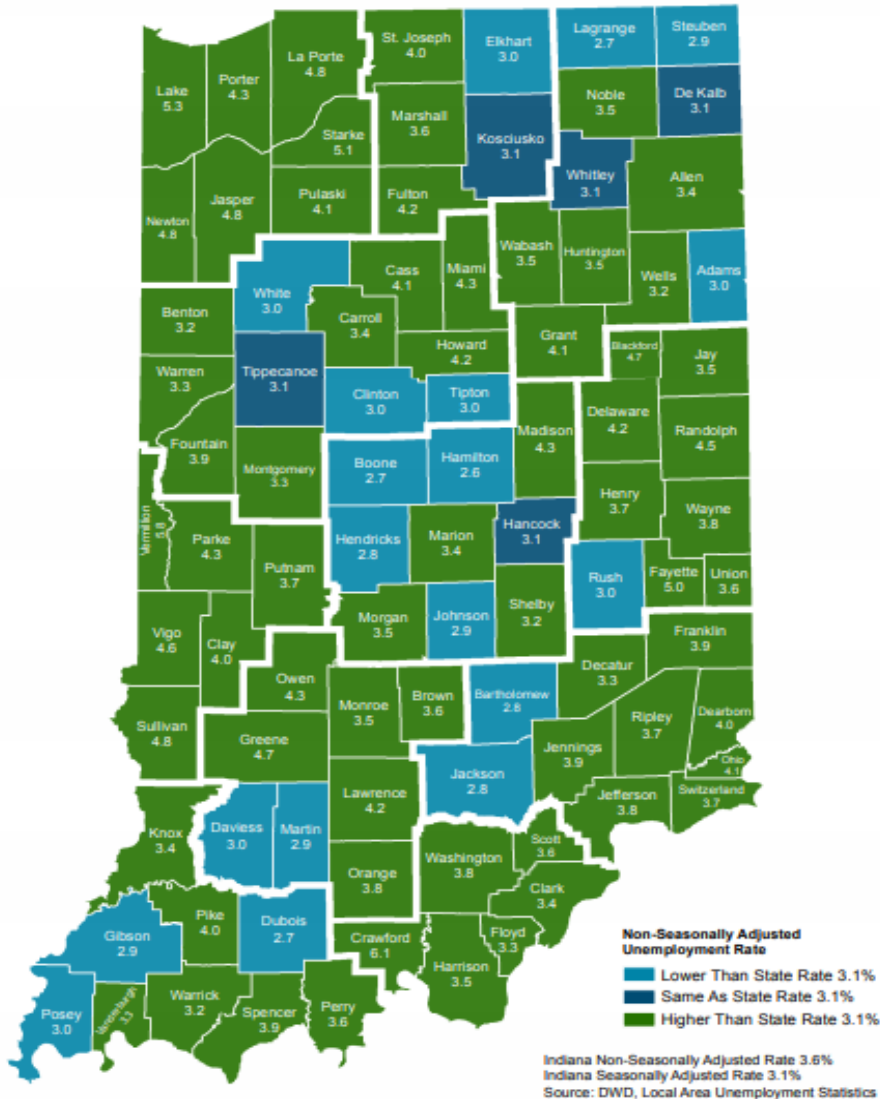
There were 425,500 workers involved in major work stoppages that began in 2019. More than three-fifths of idled workers (270,000) were in the educational services industry, which had 13 work stoppages. The average number of workers involved in work stoppages between 2010 and 2019 was 147,660; the largest number of workers involved was 485,200 in 2018.

In 2019 the largest stoppage by lost workdays was the dispute between General Motors (GM) and the United Automobile Workers, which involved 46,000 workers. The work stoppage began on September 16, 2019, and spanned for 29 working days. It resulted in a loss of 1,334,000 work days. Since 1993, there have been 22 work stoppages involving GM. The GM dispute beginning in 2019 was the fifth largest in terms of number of workers involved and second largest in terms of lost workdays. The largest GM stoppage occurred in 1998 and involved 152,200 workers and over 3 million work days lost.

These data are from the [Work Stoppages](#) program. To learn more, see "[Major Work Stoppages in 2019.](#)" Major work stoppages include both worker-initiated strikes and employer-initiated lockouts that involve 1,000 or more workers and last at least one shift. Days idle are calculated by multiplying the number of workers involved in the strike or lockout by the number of days workers are off the job, based on a 5-day workweek excluding federal holidays.

Bureau of Labor Statistics, U.S. Department of Labor, *The Economics Daily*, 25 major work stoppages in 2019 involving 425,500

County Unemployment Rates January 2020 - Non Seasonally Adjusted



INDIANA
DEPARTMENT OF
WORKFORCE
DEVELOPMENT

Questions?

Please contact the DWD
Research and Analysis
Regional Labor Analyst
listed below:

Cassie Janes

Regional Labor Analyst
Research and Analysis

Indiana Department of Workforce Development

709 S. Reed Rd

Kokomo, IN 46901

765-454-4760

cjanes@dwd.in.gov